

## Determining Morphological Traits for Selecting Wheat (*Triticum Aestivum* L.) with Improved Early-Season Forage Production

D.P. Malinowski<sup>a\*</sup>, J.C. Rudd<sup>b</sup>, W.E. Pinchak<sup>a</sup>, and J. Baker<sup>b</sup>

<sup>a</sup>Texas AgriLife Research, POB 1658, Vernon, TX 76385, USA.

<sup>b</sup>Texas AgriLife Research, 6500 Amarillo Blvd W, Amarillo, TX 79106, USA.

dmalinow@ag.tamu.edu

### ABSTRACT

Winter wheat (*Triticum aestivum* L.) is the major annual crop in the Southern Great Plains of the USA grown as dual-purpose (forage and grain) crop. Wheat breeding has focused on maximizing grain yield and tolerance to abiotic and biotic stresses. Because of a lack of clearly defined selection criteria for breeding forage-type wheat, breeders usually rely on very laborious means to measure forage quantity and quality or they use imprecise visual estimates to quantify forage production. In a series of experiments conducted at Vernon, TX during 2003-2005, we determined correlations between selected morphological traits and the early-season forage DM yield in a range of wheat breeding lines and commercial cultivars evaluated by the Wheat Breeding Program of Texas A&M AgriLife Research. Early-season forage DM yield was highly correlated with tiller number, leaf length and width, and inversely correlated with specific leaf weight. Environmental variables modified the responses. A number of wheat breeding lines and cultivars had combined three out of the four evaluated morphological traits, including Abilene Ag Exp., Cutter, Fannin, HG-9, Duster, TAM 110, TX01M5009, TX01V6016, TX03M1179, TX04M410009, and Weather master 135. These cultivars/breeding lines have been recommended for dual-purpose use; thus, the morphological traits evaluated in our studies were desirable for selection of wheat with improved forage productivity.

**Key words:** Forage, Morphological traits, Wheat

**Abbreviations:** DM, dry matter; RGR, relative growth rate; SLA, specific leaf area; SLW, specific leaf weight; TXE, Texas Elite Trial; UVT, Uniform Wheat Variety Trial

### INTRODUCTION

Winter wheat (*Triticum aestivum* L.) is the predominant commodity in the Southern Great Plains of USA, sown on 10 M ha each year. It is often used as dual-purpose (forage and grain) crop for grazing stocker cattle (*Bos* spp.) and grain production (Pinchak et al., 1996; Hossain et al., 2004). Wheat forage has a high nutritional value capable of producing weight gains greater than 1.4 kg d<sup>-1</sup> (Mack own et al., 2008). Grazing cattle on wheat forage is practiced from early winter (late November) until development of the first hollow stem, which usually occurs in early March in dual-purpose systems or through May in graze-out systems.

Historically, wheat breeding research has focused mainly on maximizing grain yield and tolerance to abiotic (drought, heat) and biotic (insects, pathogens) stresses (Lantican et al., 2005). Development of dual-purpose or forage-type wheat cultivars was not addressed until late 1980's (Rajaram and Hettel, 1995). The early research indicated that selection requirements for improved forage production might be highly specific to the target environment and management and should involve traits like early-season forage production, grain recovery potential, and reduced awns (Pfeiffer, 1992). Although grain yield potential of modern cultivars is higher than older cultivars, breeding progress for forage production, forage quality, and tolerance to grazing has been very limited (Kim et al., 2016). Texas A&M University System has released only three awn less cultivars bred primarily for grazing: Lockett, TAM 401, and TAM 204 (Rudd et al., 2012). In addition, two dual-purpose wheat cultivars have been released: TAM 202 (Worrall et al., 1995) and TAM 112 (Rudd et al., 2014). Because of a lack of clearly defined selection criteria for breeding forage-type wheat, breeders usually rely on forage quantity and quality



during the fall-spring growing season as selection tools (Krenzer et al., 1992). Such an approach may not be the most appropriate because high grain yield and high forage yield traits are not always correlated (Atkins et al., 1969; Ud-Din et al., 1993).

The objective of this study was to determine morphological traits as tools for selection of wheat cultivars with improved early-season forage productivity based on commercial cultivars and breeding lines evaluated by the Wheat Breeding Program of Texas A&M AgriLife Research (TAM Wheat Breeding Program) for high grain production and tolerance to insects, diseases, and drought.

## **MATERIALS AND METHODS**

### **Description of Field Experiments**

During 2003-2006, a series of experiments evaluating winter wheat breeding lines and cultivars were conducted at Lockett, Texas (34°05' N, 91°21' W, elevation 389 m) (only in 2003) and East Smith and Walker Research Unit near Vernon, Texas (34°03' N, 99°14' W, elevation 378 m). Each year, the TAM Wheat Breeding Program evaluates a number of wheat breeding lines and cultivars across the state for various traits, including insect and disease resistance, drought tolerance, and grain production. The evaluation studies are coordinated and implemented by numerous Texas A&M AgriLife Research and Extension faculty and staff. The evaluated wheat entries are grouped into a Uniform Wheat Variety Trial (UVT), consisting of released cultivars, and the Texas Elite Trial (TXE), which consists of advanced experimental breeding lines developed by the TAM Wheat Breeding Program. Each of the trials consists of 36-40 wheat entries that vary by region and change each growing season based on the breeding program objectives. If an experimental wheat breeding line was officially released after the study was conducted, the cultivar name is shown in parenthesis after the experimental designation.

At the Smith and Walker Research Unit, two experiments were planted in October each year on Rotan Clay Loam [fine, mixed, super active, Thermic Pachic Paleustolls] (Raushel, 2011). Experiment I consisted of 40 wheat breeding lines (TXE collection) and 40 wheat cultivars (UVT collection) and was a part of the TAM Wheat Breeding Program state-wide evaluation test. Experiment II consisted of 25-28, depending on year, wheat entries selected from the TXE and UVT collections based on contrasting characteristics, i.e., tiller number, early-season forage dry matter (DM) production, leaf morphology, and grain yield. These forage characteristics were determined on the TXE and UVT collections during a preliminary study conducted at Chillicothe, TX (34°11' N, 99°31' W, elevation 442 m) in 2002 (data not presented). Pre-planting fertilization of 34 kg ha<sup>-1</sup> N, 56 kg ha<sup>-1</sup> P<sub>2</sub>O<sub>5</sub>, and 29 kg ha<sup>-1</sup> K<sub>2</sub>O was applied each season. Wheat entries were planted in a tilled seedbed with a precision planter (Wintersteiger, Salt Lake City, Utah) at a seeding rate of 250 seeds m<sup>-2</sup>. Plot size was 1.5 by 4.5 m. Experiments at this location were not irrigated. In October 2003 only, the experiment with TXE and UVT collections was planted at Lockett on Miles fine sandy loam [fine-loamy, mixed, Thermic Udic Paleustalfs (Raushel, 2011)]. The reasons for choosing a different location with irrigation capability were severe drought conditions during the whole 2003 and predicted drought extending into 2004. Due to severe precipitation deficit, the experiment was irrigated with a sprinkle-type irrigation system at the equivalent of 2 inch precipitation once a month during October-December.

### **Forage DM Yield and Plant Morphological Measurements**

To determine early-season (early December) forage production, a sample of wheat forage was harvested to the ground level from an area of 0.5 m<sup>2</sup> located in the middle of each plot on December 10 (±3 days) each year. Forage samples were oven dried at 60°C until no changes in weight were detected. Samples were weighed to determine DM. Leaf length was measured with a ruler on 5 randomly selected leaves from each plot. Leaf area was measured on the same leaves with a LI-COR leaf area meter (LI-COR Biosciences, Lincoln, Nebraska, USA). Leaf width was calculated from leaf area and length measurements. After measurements, the 5 leaves were oven dried at 60°C F until no changes in weight were detected and weighed to determine DM. Specific leaf weight (SLW) was calculated as a ratio between leaf DM (g) and leaf area (cm<sup>2</sup>). Tiller number was determined at the

time of forage sampling from plants grown in two neighboring rows on 0.3 m distance in each row and re-calculated on 0.5 m<sup>2</sup> basis.

### Statistical Analysis

The experiments were set up as completely randomized designs and repeated during three growing seasons (October–March) in 2003–2006. In each experiment, treatments were wheat entries replicated three times. Statistical analyses were performed separately for each growing season of Experiment I and II because evaluated wheat entries varied each season in accordance with the objectives of the TAM Wheat Breeding Program. Data for early forage DM production, tiller number, leaf length, leaf width, and SLW were analyzed using Procedure Mixed (SAS Institute, 1999) (Table 1). Wheat entries were considered fixed effects, whereas replications were considered random effects in the analysis of variance (ANOVA). Significance of means was declared at  $P=0.05$ . Correlation and stepwise regression analyses of early forage DM with wheat morphological traits (tiller number, leaf length, leaf width, and SLW) were performed using the CORR Procedure and REG Procedure of the SAS software (SAS Institute, 1999). All variables left in the model of the stepwise REG procedure were significant at the  $P=0.15$ .

Table 1. The ANOVA results for the randomized, complete block design in Experiment I and II during 2003–2005 growing seasons.

Forage variable	response	Growing season	Source of variation		
			Experiment I		Experiment II
			TXE (exp. lines)	UVT (cultivars)	Wheat entry
			<i>P &gt; F</i>		
Early-season forage DM		2003-2004	0.3859	0.0835	0.0006
		2004-2005	0.1140	0.0617	0.5448
		2005-2006	0.0037	0.0971	0.0715
Tiller number		2003-2004	0.1242	0.4775	0.0290
		2004-2005	0.0017	0.0429	0.0055
		2005-2006	0.0718	0.0384	0.0022
Leaf length		2003-2004	0.0002	0.0011	0.0016
		2004-2005	0.0067	0.0066	0.1554
		2005-2006	<0.0001	0.0027	0.0046
Leaf width		2003-2004	<0.0001	<0.0001	0.4471

	2004-2005	0.0008	0.0075	0.0025
	2005-2006	<0.0001	0.0071	0.8347
SLW	2003-2004	0.0006	0.0642	0.1130
	2004-2005	0.0021	0.0237	0.0344
	2005-2006	0.0048	0.0161	0.0020

---

## **RESULTS AND DISCUSSION**

### **Weather Patterns**

Severe soil moisture deficits during the early growing season (September–December) occurred in 2003 and 2005 (Fig. 1). The long-term average annual precipitation for the experimental location is 711 mm. During the first 4 months of wheat growth (September–December), precipitation reached only 21% and 49% of the long-term average amount (225 mm) in 2003 and 2005, respectively. In contrast, precipitation amount during September–December 2004 was 37% higher than the long-term average precipitation, but most of the rainfall occurred during November. The severe soil moisture deficit conditions during wheat establishment and early growth were coupled with higher than normal temperatures. For the months September–December, average temperature was higher by 1.6°C in 2003 and 1.2°C in 2004 and 2005.

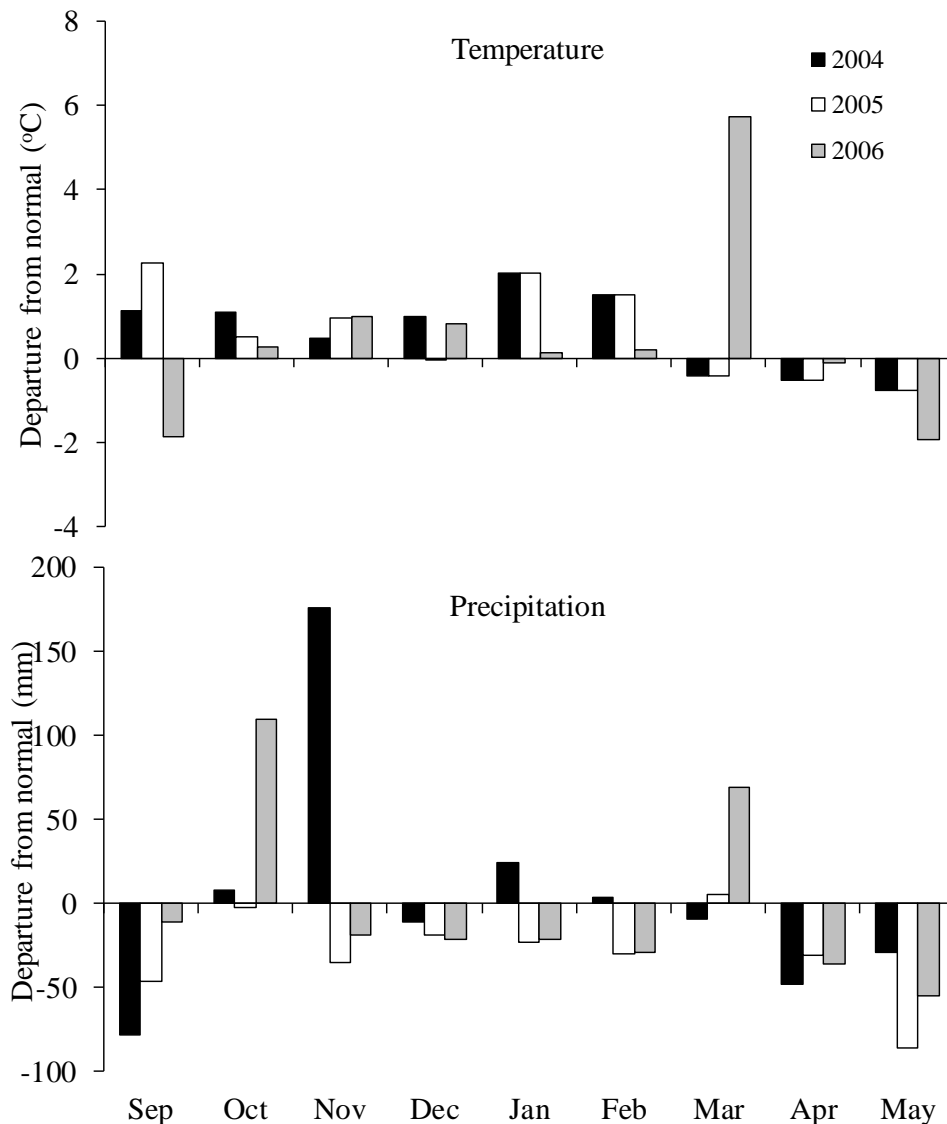


Fig. 1. Monthly temperature and precipitation departure from long-term average values at Vernon, TX for 2003-2004, 2004-2005, and 2005-2006 growing seasons (September–May).

### Differences in early-Season Forage Production among Experimental Wheat Breeding Lines and Cultivars

Early-season forage production in winter wheat is determined by genetic potential, management, and environmental factors (Krenzer et al., 1992). Results of our studies showed a broad variability among wheat breeding lines and commercial cultivars for early-season forage production and correlated morphological traits. Under supplemental irrigation in Experiment I during 2003 growing season, breeding lines TX01V6334 and TX01V6016 produced greater early-season forage DM yield (5501–6039 kg ha<sup>-1</sup>) than lines TX01D3218, TX01D3472, TX01U2723, TX01U2699, TX01V5314 (TAM 203), TX00D1390, TAMW-101, TAM 111, and TX01U2733 (2979–3876 kg ha<sup>-1</sup>) in the TXE collection, while the other lines produced an intermediate early-season forage DM yield (Fig. 2). Among commercial cultivars of the UVT collection (Fig. 3), greater early-season forage DM yield was produced by Overly, Coronado, Fannin, TAM 303, OK 102, TAM 202, 2174, and Jagelene (5064–6795 kg ha<sup>-1</sup>) than TAM 112, TAM 111, TAM 110, 2145, TAM 107, Wintex, Intrada, TAM 110 CL, AP01T3131, OK 101, Weather master 135, Cutter, and Thunderbolt (3612–4119 kg ha<sup>-1</sup>). Under rainfed conditions in 2004 growing season, breeding lines TX03M1179 and TX02V7426 produced greater early-season forage DM yield (1624 and

1306 kg ha<sup>-1</sup>, respectively) than lines TX02V7937, TX02D5813, TX03M1016, and TX02D5797 (695–822 kg ha<sup>-1</sup>), with the other lines being intermediate (Fig. 2).

Wheat cultivars Overly, Cisco, Jagelene, and Doans had greater early-season forage DM yield (1173–1327 kg ha<sup>-1</sup>) than Endurance, Thunderbolt, and TAM 202 (671–725 kg ha<sup>-1</sup>), with other cultivars having an intermediate forage DM yield (Fig. 3). Under rainfed conditions in 2005 growing season, breeding lines TX01A7340, TX04M410009, and TX03A0123 had the greatest early-season forage DM yield (2285–2672 kg ha<sup>-1</sup>) and the line TX03V77023 had the least forage DM yield (1219 kg ha<sup>-1</sup>). Other breeding lines in the TXE collection had an intermediate early-season forage DM yield. In the UVT collection (Fig. 3), the cultivars OK01307 and AP03T6115 produced greater early-season forage DM yield (2327 and 2316 kg ha<sup>-1</sup>, respectively) than cultivars Guymon, Coronado, Neosho, and AP03T6126 (1219–1669 kg ha<sup>-1</sup>), while the other cultivars were intermediate.

In Experiment II, early-season forage DM yield varied among wheat entries each growing season (Fig. 4). In 2003, the breeding line TX97V5304 and cultivar OK 101 produced higher early-season forage DM yield (938 and 721 kg ha<sup>-1</sup>, respectively) than the other wheat entries, while 2145, TX97D5088, Lockett, TAM 110, and TX01M5008 had the least early-season forage DM yield (314–399 kg ha<sup>-1</sup>). During 2004 growing season, early-season forage DM yield was less variable, with the cultivars HG-9 and OK 101 producing more early-season forage DM yield (876 and 874 kg ha<sup>-1</sup>, respectively) than lines TX01U2598, TAM 303, and TX00D1390 (568–606 kg ha<sup>-1</sup>). During the 2005 growing season, wheat entries TX00V1117, Fannin, and OK 101 had greater early-season forage DM yield (1967–2021 kg ha<sup>-1</sup>) than TAM 303, TX00D1390, HG-9, Overley, and TAM 110 (1049–1205 kg ha<sup>-1</sup>).

Majority of the wheat entries evaluated in our studies were developed to maximize grain yield, a trait that is usually not correlated with forage DM yield (Krenzer et al., 1996). Several cultivars (i.e., Lockett, HG-9, 2174, Coronado, Cutter, Dumas, Fannin, OK 101, TAM 202, TX01M5009, Endurance) have been recommended for dual-purpose use or graze-out systems in the Southern Great Plains (Worrall et al., 1995; Bean et al., 2005). The cultivar rank for early-season forage DM productivity varied with environmental conditions each season in our studies. The best early-season forage producers were experimental lines TX00V1117, TX01V6334, TX01V6016, TX03M1179, TX01A7340, TX01M410009, and TX97V5304, and cultivars Overly, Coronado, Cisco, OK01307, AP03T6115, Jagger, HG-9, OK 101, and Fannin. The results agree with breeding objectives for improved forage productivity of these breeding lines and cultivars (Worrall et al., 1995; Bean, 2006; Edwards et al., 2008).

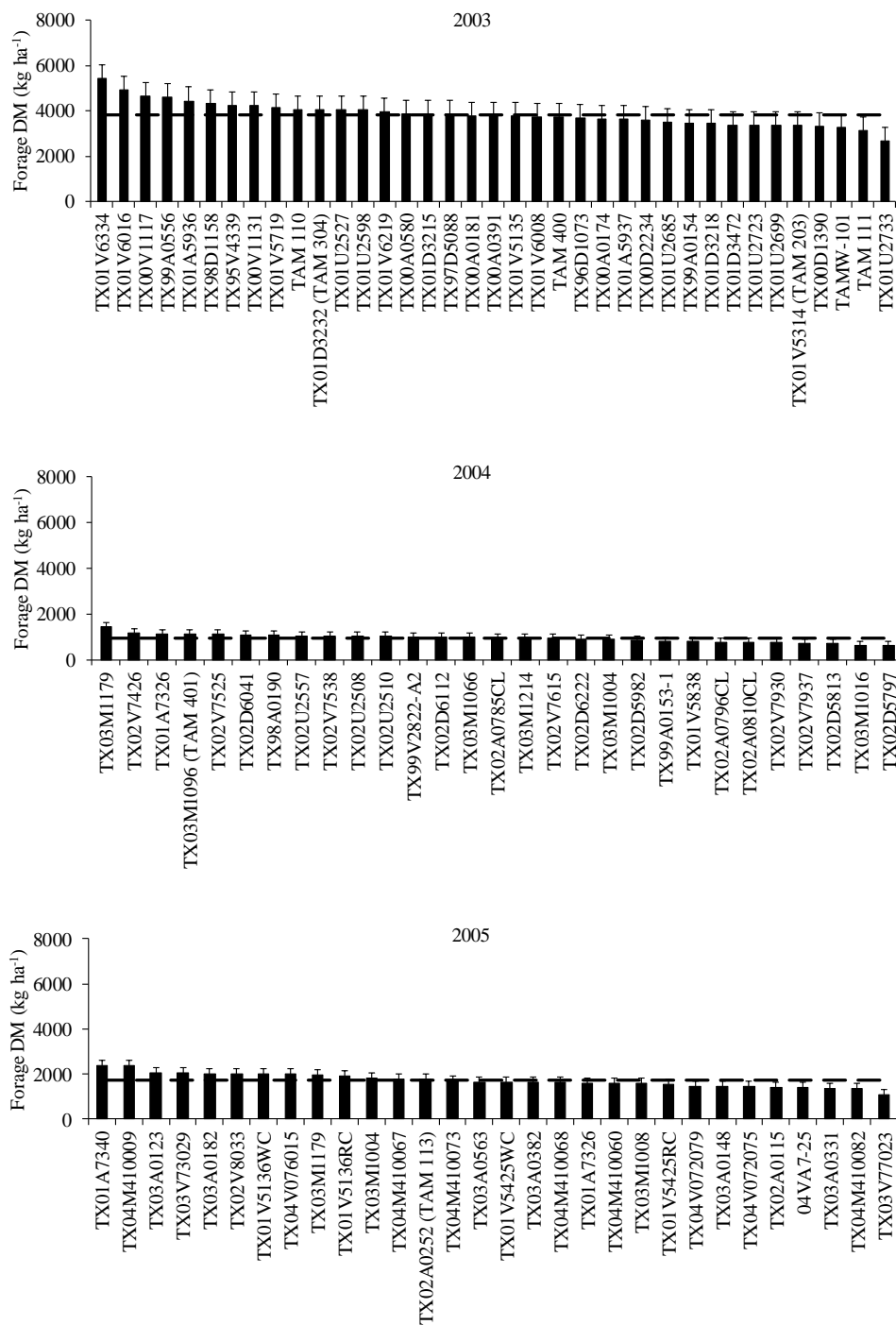


Fig. 2. Early-season (December) forage DM yield of wheat experimental lines in the TXE collection during 2003, 2004, and 2005 growing seasons. Bars indicate 1 s.e. Dotted line indicates early-season forage DM yield averaged over all wheat entries for a particular growing season.

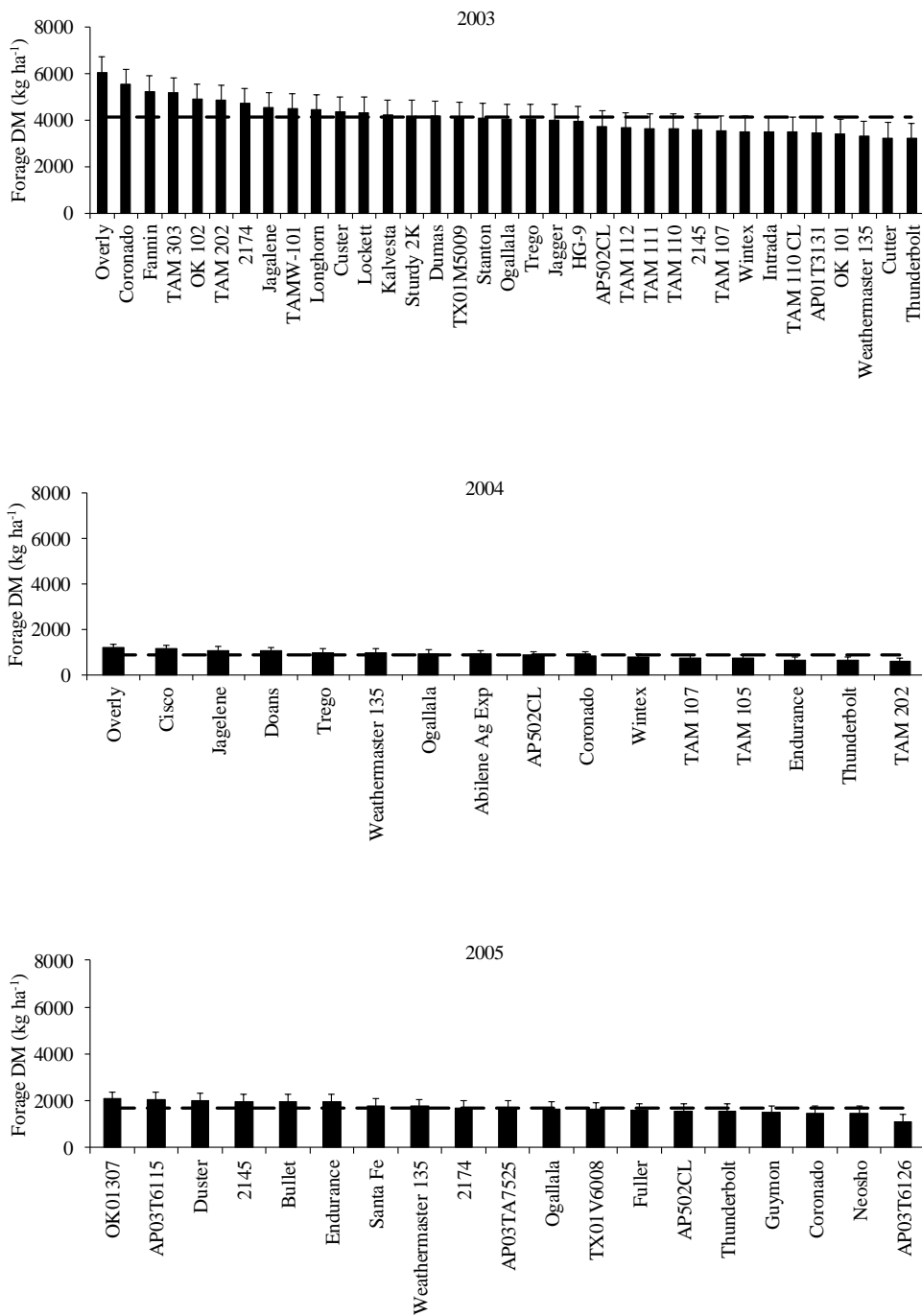


Fig. 3. Early-season (December) forage DM yield of wheat cultivars in the UVT collection during 2003, 2004, and 2005 growing seasons. Bars indicate 1 s.e. Dotted line indicates early-season forage DM yield averaged over all wheat entries for a particular growing season.



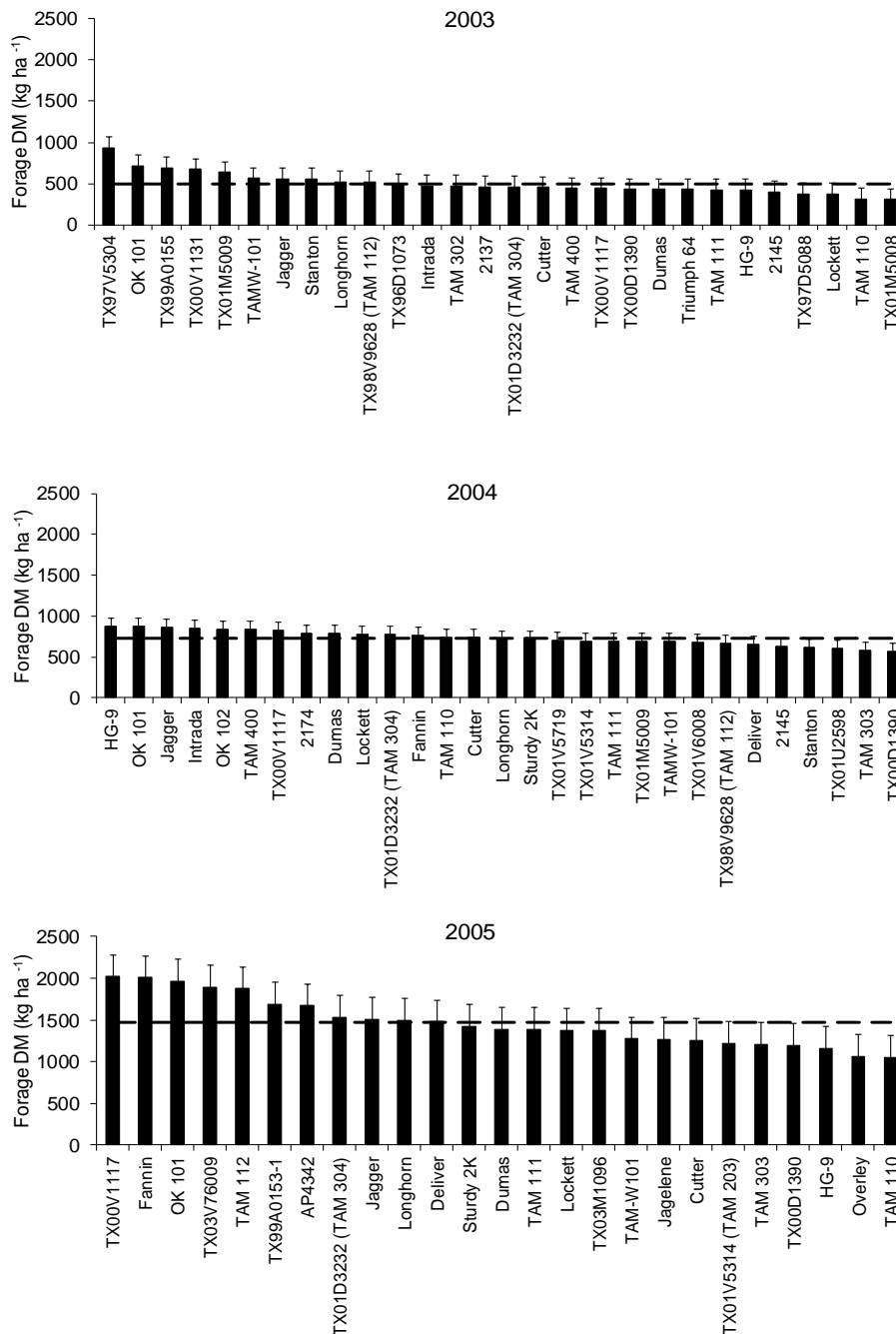


Fig. 4. Early-season (December) forage DM of wheat cultivars and breeding lines evaluated in Experiment II during 2003, 2004, and 2005 growing seasons. Bars indicate 1 s.e. Dotted line indicates early-season forage DM yield averaged over all wheat entries for a particular growing season.

### Correlations Between Morphological Traits and Early-Season Forage Production

The correlation coefficients showed significant relationships between the studied morphological traits and the early-season forage DM yield, both under supplemental irrigation in Experiment I during 2003 growing season and under rainfed conditions (Experiment I and Experiment II) during 2003, 2004, and 2005 growing seasons (Table 2 and Table 3). Except for 2004 growing season of Experiment II, early-season forage DM yield was highly positively correlated with tiller number (correlation coefficient values in the range of 0.36–0.81) in 8 out of 9 times (89%). The next morphological trait positively correlated with early-season forage DM was leaf length

(correlation coefficient values in the range of 0.23–0.69) in 7 out of 9 times (78%). Leaf width was also positively correlated with early-season forage DM in 4 out of 9 times (44%), with correlation coefficient values in the range of 0.21–0.41. Specific leaf weight was negatively correlated with early-season forage DM in 5 out of 9 times (55%), especially in seasons with adequate soil moisture availability (i.e., under supplemental irrigation in Experiment I during 2003 growing season and during the excessively wet 2004 growing season in both experiments), with correlation coefficient values ranging from –0.22 to –0.59. Tiller number and SLW were negatively correlated with each other in 4 out of 9 times (44%), with correlation coefficient values ranging from –0.46 to –0.61.

Table 2. Correlation coefficients between early-season forage DM, leaf length, leaf width, SLW, and tiller number in wheat calculated from Experiment I during 2003–2005 growing seasons. Within a row, the upper value is for the TXE (experimental breeding lines) and the lower value is for the UVT (commercial cultivars) collections.

Growing season	Trait	Forage DM	Leaf length	Leaf width	SLW
2003	Leaf length	0.47 **			
		0.51 **			
	Leaf width	0.21 *	0.19 *		
		0.32 **	0.25 **		
	SLW	-0.22 *	-0.26 **	-0.08 ns	
		-0.10 ns	-0.27 **	-0.12 ns	
Tiller number	0.36 **	0.07 ns	-0.15 ns	-0.02 ns	
	0.46 **	0.09 ns	-0.07 ns	-0.01 ns	
2004	Leaf length	0.14 ns			
		0.35 *			
	Leaf width	0.19 ns	0.56 **		
0.41 *		0.38 *			
SLW	-0.59 **	-0.17 ns	0.21 ns		

		-0.44 *	-0.42 *	-0.35 *	
	Tiller number	0.72 **	0.03 <sup>ns</sup>	-0.09 <sup>ns</sup>	-0.61 **
		0.64 **	-0.10 <sup>ns</sup>	-0.07 <sup>ns</sup>	-0.20 <sup>ns</sup>
2005	Leaf length	0.38 **			
		0.38 **			
	Leaf width	0.12 <sup>ns</sup>	0.20 <sup>ns</sup>		
		0.18 <sup>ns</sup>	0.33 *		
	SLW	-0.06 <sup>ns</sup>	-0.24 *	0.06 <sup>ns</sup>	
		-0.36 **	-0.22 <sup>ns</sup>	-0.21 <sup>ns</sup>	
	Tiller number	0.67 **	0.11 <sup>ns</sup>	-0.12 <sup>ns</sup>	-0.61 **
		0.77 **	0.20 <sup>ns</sup>	-0.09 <sup>ns</sup>	-0.46 **

ns, \* and \*\*: Not significant, significant at the 5% and 1% levels of probability, respectively.

Table 3. Correlation coefficients between early-season forage DM, leaf length, leaf width, specific leaf weight (SLW), and tiller number in wheat calculated from Experiment II during 2003-2005 growing seasons.

Growing season	Trait	Forage DM	Leaf length	Leaf width	SLW
2003	Leaf length	-0.01 <sup>ns</sup>			
	Leaf width	0.22 *	0.12 <sup>ns</sup>		
	SLW	0.09 <sup>ns</sup>	-0.39 **	-0.53 **	

	Tiller number	0.81 **	0.10 <sup>ns</sup>	0.24 *	0.05 <sup>ns</sup>
2004	Leaf length	0.23 *			
	Leaf width	-0.08 <sup>ns</sup>	0.53 **		
	SLW	-0.51 **	-0.22 *	-0.16 <sup>ns</sup>	
	Tiller number	-0.17 <sup>ns</sup>	0.01 <sup>ns</sup>	-0.07 <sup>ns</sup>	0.13 <sup>ns</sup>
2005	Leaf length	0.69 **			
	Leaf width	0.15 <sup>ns</sup>	0.11 <sup>ns</sup>		
	SLW	-0.17 <sup>ns</sup>	-0.03 <sup>ns</sup>	-0.18 <sup>ns</sup>	
	Tiller number	0.71 **	0.31 *	-0.10 <sup>ns</sup>	-0.48 **

ns, \* and \*\*: Not significant, significant at the 5% and 1% levels of probability, respectively.

Results of the stepwise regression variance analysis indicated that early-season forage DM yield was mainly determined by tiller number, both in Experiment I (Table 4) and Experiment II (Table 5). Depending on the growing season and experiment, tiller number explained 10–66%, leaf length 5–26%, leaf width 2–21%, and SLW 2–26% variation in early-season forage DM yield.

Our results indicate that high tiller number, long and wide leaves, and low SLW are correlated with early-season forage DM yield. In grasses, selection for high yielding forage cultivars aims to increase both the number of tillers per plant and the biomass per tiller (Hanson and Carnahan, 1956). Tillering potential (and resulting early-season forage productivity) in wheat is determined by genetic makeup (Li et al., 2010), environmental factors such as light, rainfall and temperature, and certain management factors, i.e., mineral nutrition (Assuero and Tognetti, 2010). Among TXE wheat breeding lines evaluated in Experiment I and Experiment II, the highest tiller numbers were noted for TX01M5009, TX01V6008, TX01U2527, TX01A7326, TX99V2822-A2, TX02V8033,

TX01V5425RC, TX04M410009, and TX97V5304 (Table 6). Among the UVT wheat cultivars evaluated in these experiments, Ogallala, Trego, Cisco, OK01307, Duster, 2145, OK 101, Intrada, TAM 112, Fannin, and TAM 303 had the highest tiller number. Similar relationships between tiller number and forage DM yield were reported in perennial ryegrass (*Lolium perenne* L.) (Lazenby and Rogers, 1964; Thomson et al., 1973), tall fescue [*Lolium arundinaceum* (Schreb.) Darbysh.] (Nelson et al., 1977), and smooth bromegrass (*Bromus inermis* Leys.) (Tan et al., 1979).

Table 4. Analysis of stepwise regression of early-season forage DM yield with tiller number, leaf length, leaf width, and SLW in Experiment I (TXE and UVT wheat collections) during three growing seasons.

Growing season	Variable entered	Partial R <sup>2</sup>	Model R <sup>2</sup>	C(p)	F Value	Pr > F
2003	TXE collection					
	Leaf length	0.2237	0.2237	25.75	34.00	<.0001
	Tiller number	0.1054	0.3290	8.51	18.37	<.0001
	Leaf width	0.0325	0.3615	4.58	5.90	0.0167
	UVT collection					
	Tiller number	0.2635	0.2635	15.93	64.63	<.0001
	Leaf length	0.2594	0.5229	85.71	41.33	<.0001
	Leaf width	0.0494	0.5724	4.47	13.41	0.0004
2004	TXE collection					
	Tiller number	0.5192	0.5192	19.41	62.64	<.0001
	Leaf width	0.0681	0.5873	10.73	9.40	0.0033
	SLW	0.0620	0.6493	3.00	9.91	0.0026
	UVT collection					
	Tiller number	0.4102	0.4102	24.37	20.86	<.0001
	Leaf width	0.2086	0.6188	7.85	15.87	0.0004
	Leaf length	0.0721	0.6909	3.45	6.53	0.0163
2005	TXE collection					
	Tiller number	0.4535	0.4535	42.61	73.02	<.0001
	Leaf length	0.0954	0.5489	22.16	18.40	<.0001
	SLW	0.0634	0.6123	9.25	14.06	0.0003
	Leaf width	0.0266	0.6388	5.00	6.25	0.0143
	UVT collection					
	Tiller number	0.5995	0.5995	7.44	82.32	<.0001
	Leaf length	0.0527	0.6521	1.49	8.18	0.0060

Table 5. Analysis of stepwise regression of early-season forage DM yield with tiller number, leaf length, leaf width, and SLW in wheat in Experiment II during three growing seasons.

Growing season	Variable entered	Partial R <sup>2</sup>	Model R <sup>2</sup>	C(p)	F Value	Pr > F
2003	Tiller number	0.6613	0.6613	0.43	160.11	<.0001

2004	SLW	0.2615	0.2615	6.56	30.10	<.0001
2005	Tiller number	0.5457	0.5457	66.01	87.70	<.0001
	Leaf length	0.1810	0.7267	13.42	47.69	<.0001
	Leaf width	0.0225	0.7492	8.64	6.37	0.0138
	SLW	0.0187	0.7679	5.00	5.64	0.0203

Table 6. Wheat entries with highest and lowest tiller numbers in Experiment I and II during 2003-2005 growing seasons.

Growing season	Experiment	Collection	Highest tiller number	Lowest tiller number
2003	I	TXE	TX01V6008 (1663) <sup>†</sup>	TX01D3218 (973)
			TX01U2527 (1657)	TX01U2723 (927)
		UVT	TX01M5009 (1461)	Cutter (839)
	II		Ogallala (1284)	TAM 110 CL (833)
			TX97V5304 (361)	HG-9 (116)
			OK 101 (294)	TX01M5008 (115)
2004	I	TXE	TX01A7326 (997)	TX02D5797 (383)
			TX99V2822-A2 (886)	TX03M1016 (208)
		UVT	Trego (840)	Abilene Ag Exp (411)
			Cisco (803)	TAM 105 (378)
			Ogallala (771)	
	II		Intrada (1067)	HG-9 (602)
			TX01V6008 (1064)	OK 102 (564)
2005	I	TXE	TX02V8033 (981)	TX03A0148 (548)
			TX01V5425RC (978)	TX03V77023 (530)

		TX04M410009 (978)	
	UVT	OK01307 (1189)	Thunderbolt (693)
		Duster (1022)	AP03T6126 (615)
		2145 (1022)	
II		TAM 112 (1341)	TAM 110 (615)
		Fannin (1185)	Overley (589)
		TAM 303 (1030)	

† Numbers in parentheses indicate tiller number 0.5 m<sup>-2</sup>.

Leaf length and leaf width were also closely correlated with early-season forage productivity in our studies. The longest leaves were produced by TXE breeding lines TX03M1179, TX01A7340, TX01V6016, TX04M410009, TX04V072075, TX02V7937, TX99A0556, TX01D3215, TX00V1117, TX02U2557, TX02D5797, TX03V76009, and TX99A0153-1 (Table 7). Among wheat cultivars in the UVT collection, the longest leaves were produced by HG-9, Duster, Weather master 135, Endurance, Fannin, Abilene Ag Exp, Wintex, Longhorn, and Stanton. Among TXE wheat breeding lines, the widest leaves were produced by TX04M410067, TX02A0115, TX01A7340, TX03A0382, TX03M1179, TX03V73029, TX01D3232 (TAM 304), TX03M1016, TX02U2557, TX02D6112, TX01M5009, TX01A5936, TX01V5719, and TX01V6334 (Table 8). Cultivars with the widest leaves in the UVT collection were Dumas, Cutter, Weather master 135, Guymon, 2145, HG-9, Overly, TAM 110, Longhorn, Abilene Ag Exp, Doans, and Jagelene. Several studies have indicated a negative correlation between leaf elongation rate and tillering in tall fescue (Nelson et al., 1977; Zarrouh et al., 1984) and perennial ryegrass (Gautier et al., 1999). Thus, it may be difficult to combine high tillering potential and leaf elongation rate in one wheat cultivar. In our studies, we generally did not observe significant correlations between leaf length or leaf width and tiller number in wheat. Two exceptions were found in Experiment II during 2003 growing season (leaf width) and 2005 growing season (leaf length).

Table 7. Wheat entries with longest and shortest leaves in Experiment I and II during 2003-2005 growing seasons.

Growing season	Experiment	Collection	Longest leaf length	Shortest leaf length
2003	I	TXE	TX01V6016 (21.5) †	TX00D2234 (13.5)
			TX99A0556 (20.2)	TAMW-101 (12.4)
			TX01D3215 (20.1)	
		UVT	Fannin (21.1)	TX01M5009 (13.5)
			Cutter VH (19.6)	Stanton (13.5)
			Longhorn (19.1)	Weathermaster (13.3)

	II		Longhorn (17.1)	Lockett (11.8)
			Stanton (15.4)	TX01M5008 (11.8)
				TX96D1073 (11.7)
				TAM 302 (11.5)
2004	I	TXE	TX02V7937 (21.1)	TX02A0796CL (14.9)
			TX02U2557 (19.5)	TX99V2822-A2 (14.2)
			TX02D5797 (19.5)	
		UVT	Abilene Ag Exp (20.9)	Ogallala (14.0)
			Wintex (20.6)	Thunderbolt (13.8)
			Weathermaster (19.9)	
	II		HG-9 (22.1)	TAM 112 (13.9)
			TX00V1117 (19.8)	Stanton (13.2)
2005	I	TXE	TX03M1179 (22.0)	TX04M410073 (16.2)
			TX01A7340 (21.6)	TX03A0563 (16.1)
			TX04M410009 (21.2)	
			TX04V072075 (21.2)	
		UVT	Duster (21.8)	Thunderbolt (16.8)
			Weathermaster (21.7)	Santa Fe (16.6)
			Endurance (21.3)	AP502CL (16.5)
				Neosho (16.4)
	II		TX03V76009 (19.2)	TAM 111 (14.4)
			Fannin (18.8)	Cutter (14.3)



TX99A0153-1 (18.8)

TAM-W101 (13.5)

TX00V1117 (18.7)

†Numbers in parentheses indicate average leaf length (cm).

Table 8. Wheat entries with widest and narrowest leaves in Experiment I and II during 2003-2005 growing seasons.

Growing season	Experiment	Collection	Widest leaf width	Narrowest leaf width
2003	I	TXE	TX01A5936 (0.35) †	TX01U2733 (0.23)
			TX01V6334 (0.32)	TX00V1131 (0.23)
			TX01V5719 (0.32)	TX01U2699 (0.23)
		UVT	Dumas (0.34)	Ogallala (0.23)
			Cutter ML (0.33)	Thunderbolt (0.22)
			Overly (0.32)	Jagger (0.21)
	II		TX01M5009 (0.48)	2137 (0.39)
			TAM 110 (0.48)	TX97D5088 (0.38)
			Longhorn (0.48)	TX99A0155 (0.37)
	2004	I	TXE	TX03M1016 (0.49)
TX02U2557 (0.48)				TX02D5813 (0.33)
TX02D6112 (0.46)				TX03M1004 (0.31)
UVT			Overly (0.49)	Thunderbolt (0.35)
			Abilene Ag Exp (0.44)	TAM 107 (0.33)
			Doans (0.44)	Endurance (0.28)
		Jagelene (0.44)		
II			2145 (0.55)	TX01U2598 (0.35)
			Dumas (0.55)	Fannin (0.34)

			HG-9 (0.51)	TX01V5314 (TAM 203) (0.30)
2005	I	TXE	TX04M410067 (0.66)	TX03A0331 (0.41)
			TX02A0115 (0.64)	TX01V5425RC (0.41)
			TX01A7340 (0.62)	
			TX03A0382 (0.62)	
			TX03M1179 (0.62)	
			TX03V73029 (0.62)	
		UVT	Weathermaster 135 (0.56)	Fuller (0.40)
			Guymon (0.55)	SantaFe (0.38)
	II		Dumas (0.62)	TAM 111 (0.43)
			TX01D3232 (TAM 304) (0.62)	TX03M1096 (TAM 401) (0.43)
			Cutter (0.57)	Fannin (0.42)

†Numbers in parentheses indicate average leaf length (cm).

The lowest SLW was noted for TX02V7426, TX98A0190, TX03M1179, TX02U2510, TX03M1008, TX01V5425WC, and TX00D1390 in the TXE collection (Table 9). Among the UVT wheat cultivars, HG-9, 2174, Lockett, TAM 400, Cisco, Abilene Ag Exp, Weathermaster 135, AP502CL, Wintex, Stanton, Intrada, Jagger, and TAM 110 had the lowest SLW. Specific leaf weight (an inverse of specific leaf area) has been associated with relative growth rate (RGR) in numerous non-woody C<sub>3</sub> species (Poorter and Remkes, 1990). Fast growing species with a high RGR express lower SLW (or higher specific leaf area, SLA) than slow growing species with high SLW. Results of our studies suggest that a relationship between SLW and growth rate occurs also in wheat, i.e., low SLW is associated with high tiller number and forage production in the early growing season. Specific leaf weight may affect forage DM accumulation in wheat because of a positive association between SLW and net CO<sub>2</sub> exchange rate per unit leaf area (Khan and Tsunoda, 1970; Delaney and Dobrenz, 1976; Dornhoff and Shible, 1976) and a negative association between SLW and the rate of leaf area expansion (Rawson et al., 1987; Hay, 1990; Solhaug, 1991). The negative correlation between SLW and early-season forage production, however, varied among seasons, suggesting that environmental factors may have played more significant role in affecting SLW (and early-season forage DM yield) than wheat genotype effects. Similar results were reported by López-Castañeda et al., (1995) and Rebetzke et al., (2004) who found that environment had the largest influence on SLW both directly and through interactions with wheat genotypes.

Table 9. Wheat entries with highest and lowest SLW in Experiment I and II during 2003-2005 growing seasons.

Growing season	Experiment	Collection	Highest SLW	Lowest SLW
2003	I	TXE	TX00D2234 (0.0075) †	TX01U2723 (0.0058)

			TAMW-101 (0.0074)	TX01V6016 (0.0054)
				TX00A0391 (0.0054)
		UVT	Kalvesta (0.0069)	Cutter H (0.0053)
			Trego (0.0068)	Cutter MH (0.0053)
	II		TX97V5304 (0.0084)	TAM 400 (0.0049)
			2137 (0.0074)	Jagger (0.0048)
				TAM 110 (0.0048)
				Stanton (0.0046)
				Intrada (0.0046)
2004	I	TXE	TX03M1016 (0.0056)	TX98A0190 (0.0040)
			TX02A0785CL (0.0049)	TX03M1179 (0.0040)
			TX02D5813 (0.0048)	TX02U2510 (0.0040)
				TX02V7426 (0.0038)
		UVT	TAM 202 (0.0047)	Abilene Ag Exp (0.0042)
			Thunderbolt (0.0047)	Weathermaster (0.0042)
			TAM 107 (0.0046)	AP502CL (0.0042)
			Coronado (0.0046)	Wintex (0.0042)
				Cisco (0.0038)
	II		TX01V6008 (0.0047)	2174 (0.0036)
			Stanton (0.0046)	Lockett (0.0036)
				TAM 400 (0.0036)
				HG-9 (0.0034)
2005	I	TXE	TX03V73029 (0.0058)	TX03M1179 (0.0047)

	TX01V5136WC (0.0057)	TX01V5425WC (0.0046)
		TX03M1008 (0.0045)
UVT	AP502CL (0.0057)	2174 (0.0044)
	Bullet (0.0055)	Weathermaster 135 (0.0044)
II	TAM 110 (0.0058)	TX00D1390 (0.0047)
	TAM 111 (0.0057)	HG-9 (0.0047)
		Sturdy2K (0.0041)

† Numbers in parentheses indicate SLW ( $\text{g cm}^{-2}$ ).

## CONCLUSIONS

Among the wheat breeding lines and cultivars evaluated in our studies, there was no single one with all four morphological traits (high tiller number, long and wide leaves, and low SLW) combined to maximize early-season forage DM yield. Tiller number and leaf area are considered important traits for the improvement of forage DM productivity in wheat (Kim et al., 2016). Several wheat entries expressed high tillering potential and long or wide leaves, including Fannin, Duster (Edwards et al., 2012), TX01M5009, and TX04M410009. Other wheat entries expressed long and/or wide leaves and low SLW, including Abilene Ag Exp, Cutter, HG-9, TAM 110, TX01V6016, TX03M1179, and Weathermaster 135. Most of these cultivars/breeding lines have been recommended for dual-purpose use; thus, the morphological traits evaluated in our studies were desirable for selection of wheat with improved forage productivity. It is also interesting to note that TX01M5009 and TAM 112 (Rudd et al., 2014) were parents of the recently released forage and dual-purpose wheat cultivar, TAM 204 (Ledbetter, 2014), indicating that the morphological traits correlated with high early-season forage DM yield may be heritable.

## Conflict of Interest Statement

The authors declare no conflict of interest in conducting these studies.

## Funding Sources

These studies were supported by the Texas Wheat Producers Board.

## REFERENCES

1. Assuero, S.G., and J.A. Tognetti. 2010. Tillering regulation by endogenous and environmental factors and its agricultural management. *Americas J. Plant Sci. Biotech.* 4:35–48.
2. Atkins, I.M., Merkle, O.G., and P.E. Pawlisch. 1969. Visual estimates and clipping plot size for evaluating the forage potential of small grain varieties. *Agron. J.* 61:88–91.
3. Bean, B. 2006. 2006 Wheat variety trials conducted in the Texas and New Mexico High Plains. Texas Cooperative Extension. Texas A&M Univ., College Station. [http://agrilife.org/amarillo/files/2010/11/2006\\_wheat\\_annual\\_summary.pdf](http://agrilife.org/amarillo/files/2010/11/2006_wheat_annual_summary.pdf) (accessed 12 Nov. 2018).

4. Bean, B., Morgan, G., and J. Rudd. 2005. 2004-2005 Description of wheat varieties in uniform regional and county trials. Texas Cooperative Extension. Texas A&M Univ., College Station. <http://agrilife.org/amarillo/files/2010/11/2005WheatVarietyDescriptions.pdf> (accessed 12 Nov. 2018).
5. Delaney, R.H., and A.K Dobrenz. 1976. Morphological and anatomical features of alfalfa leaves are related to CO<sub>2</sub> exchange. *Crop Sci.* 14:444–447.
6. Dornhoff, G.M., and R. Shibles. 1976. Leaf morphology and anatomy in relation to CO<sub>2</sub> exchange rate of soybean leaves. *Crop Sci.* 16: 377–381.
7. Edwards, J., Austin, R., Carver, B., Tipton, B., Butchee, D., and J. Sanders. 2008. Fall forage production by winter wheat varieties in Oklahoma. *Production Technol.* 20 (1). Oklahoma State Univ., Stillwater, OK. <http://croptrials.okstate.edu/wheat/forage-yield/08-07Fall%20Forage%20Production%20in%202007.pdf> (accessed 12 Nov. 2018).
8. Edwards, J.T., Hunger, R.M., Smith, E.L., Horn, G.W., Chen, M.-S., Yan, L., Bai, G., Bowden, R.L., Klatt, A.R., Rayas-Duarte, P., Osburn, R.D., Giles, K.L., Kolmer, J.A., Jin, Y., Porter, D.R., Seabourn, B.W., Bayles, M.B., and B.F. Carver. 2012. 'Duster' wheat: A durable, dual-purpose cultivar adapted to the Southern Great Plains of the USA. *J. Plant Registr.* 6:37–48.
9. Gautier, H., Varlet-Grancher, C., and L. Hazard. 1999. Tillering responses to the light environment and to defoliation in populations of perennial ryegrass (*Lolium perenne* L.) selected for contrasting leaf length. *Ann. Bot.* 83:423–429.
10. Hanson, A.A., and H.L. Carnahan. 1956. Breeding perennial forage grasses. Tech. Bull. No. 1145. United States Department of Agriculture. Agricultural Research Service, Washington, D.C.
11. Hay, R.K.M. 1990. Tansley Review No. 26. The influence of photoperiod on the dry matter production of grasses and cereals. *New Phytol.* 116:233–254.
12. Horn, G.W., Raun, W.R., Highfill, G.A., Bowen, C., and R.K. Boman. 1993. Evaluation of bloat potential of cattle as affected by N and K fertilization in continuous winter wheat. *Animal Science Research Report P-933.* pp. 269–274. Oklahoma State Univ., Stillwater, OK. [http://www.beefextension.com/research\\_reports/1993rr/93\\_46.pdf](http://www.beefextension.com/research_reports/1993rr/93_46.pdf) (accessed 12 Nov. 2018).
13. Hossain, I., Epplin, F.M., Horn, G.W., and E.G. Krenzer, Jr. 2004. Wheat production practices used by Oklahoma grain and livestock producers. Oklahoma Agric. Exp. Stn. Publication B-818. Oklahoma State Univ., Stillwater, OK. <http://pods.dasnr.okstate.edu/docushare/dsweb/Get/Rendition-1928/unknown> (accessed 12 Nov. 2018).
14. Khan, M.A., and S. Tsunoda. 1970. Differences in leaf photosynthesis and leaf transpiration rates among six commercial wheat varieties of West Pakistan. *Japanese J. Plant Breeding* 20:344–350.
15. Kim, K.S., Anderson, J.D., Newell, M.A., Grogan, S.M., Byrne, P.F., Baenziger, P.S., and T.J. Butler. 2016. Genetic diversity of Great Plains hard winter wheat germplasm for forage. *Crop Sci.* 56:2297-2305.
16. Krenzer, E.G., Jr, Tarrant, A.R., Bernardo, D.J., and G.W. Horn. 1996. An economic evaluation of wheat cultivars based on grain and forage production. *J. Prod. Agric.* 9:66–73.
17. Krenzer, E.G., Jr, Thompson, J.D. and B.F. Carver. 1992. Partitioning of genotype x environment interactions of winter wheat forage yield. *Crop Sci.* 32:1143–1147.

18. Lantican, M.A., Dubin, H.J., and M.L. Moris. 2005. Impacts of international wheat breeding research in the developing world, 1988-2002. CIMMYT, Mexico, D.F. <http://cuke.hort.ncsu.edu/cucurbit/wehner/521/hs521readings/WhtBrdCIMMYT.pdf> (accessed 12 Nov. 2018).
19. Lazenby, A., and H.H. Rogers. 1964. Selection criteria in grass breeding. II. Effect, on *Lolium perenne* L., of differences in population density, variety and available moisture. *J. Agric. Sci.* 62:285–298.
20. Ledbetter, K. 2014. Texas A&M AgriLife program to release two new wheat varieties. Texas A&M AgriLife – Ag News, Texas A&M Univ., College Station, TX. <http://today.agrilife.org/2014/05/21/texas-am-agrilife-program-to-release-two-new-wheat-varieties> (accessed 12 Nov. 2018).
21. Li, Z., Peng, T., Xie, Q., Han, S., and J. Tian. 2010. Mapping of QTL for tiller number at different stages of growth in wheat using double haploid and immortalized F2 populations. *J. Genetics* 89:409–415.
22. López-Castañeda, C., Richards, R.A., and G.D. Farquhar. 1995. Variation in early vigor between wheat and barley. *Crop Sci.* 35:472–479.
23. MacKown, C.T., Carver, B.R., and T.J. Edwards. 2008. Occurrence of condensed tannins in wheat and feasibility for reducing pasture bloat. *Crop Sci.* 48:2470–2480. doi:10.2135/cropsci2008.01.0020
24. Nelson, C.J., Asay, K.H., and D.A. Sleper. 1977. Mechanisms of canopy development of tall fescue genotypes. *Crop Sci.* 17:449–452.
25. Pfeiffer, W.H. 1992. Triticale improvement strategies at CIMMYT: exploiting adaptive patterns and end-use orientation. In: D.G. Tanner and W. Mwangi, editors, *Proceedings of The Seventh Regional Wheat Workshop for Eastern, Central and Southern Africa*, Nakuru, Kenya. 16–19 September 1991. CIMMYT, Mexico, D.F., Mexico. pp. 73–85.
26. Pinchak, W.E., Worrall, W.D., Caldwell, S.P., Hunt, L.J., Worrall, H.J., and M. Conoly. 1996. Interrelationships of forage and steer growth dynamics on wheat pasture. *J. Range Manage.* 49:126–130. doi:10.2307/4002681
27. Poorter, H., and C. Remkes. 1990. Leaf area ratio and net assimilation rate of 24 wild species differing in relative growth rate. *Oecologia* 83:553–559.
28. Rajaram, S., and G.P. Hettel. 1995. Wheat breeding at CIMMYT: Commemorating 50 years of research in Mexico for global wheat improvement. *Wheat Special Report No. 29*. CIMMYT, Mexico, D.F., Mexico.
29. Raushel, F. 2011. List of profiles by soil order. Texas A&M Univ., College Station, TX. <http://soildata.tamu.edu/order.htm> (accessed 12 Nov. 2018).
30. Rawson, H.M., Gardner, P.A., and M.J. Long. 1987. Sources of variation in specific leaf area in wheat grown at high temperature. *Aust. J. Plant Physiol.* 14:287–289.
31. Rebetzke, G.J., Botwright, T.L., Moore, C.S., Richards, R.A., and A.G. Condon. 2004. Genotypic variation in specific leaf area for genetic improvement of early vigour in wheat. *Field Crops Res.* 88:179–189.
32. Rudd, J.C., Devkota, R.N., Baker, J.A., Peterson, G.L., Lazar, M.D., Bean, B., Worrall, D., Baughman, T., Marshall, D., Sutton, R., Rooney, L.W., Nelson, L.R., Fritz, A.K., Weng, Y., Morgan, G.D., and B.W. Seabourn. 2014. 'TAM 112' Wheat: A greenbug and wheat curl mite resistant cultivar adapted to the dryland production system in the Southern High Plains. *J. Plant Registr.* 8:291–297.

33. Rudd, J.C., Devkota, R.N., Fritz, A.K., Baker, J.A., Obert, D., Worrall, D., Sutton, R., Rooney, L.W., Nelson, L.R., Weng, Y. Morgan. G.D., Bean, B., Ibrahim, A., Klatt, A., Bowden, R., Graybosch, R., Jin, Y., and B.W. Seabourn. 2012. Registration of TAM 401 wheat. *J. Plant Registr.* 6:60–65.
34. SAS Institute. 1999. SAS user's guide. Version 8.0. SAS Institute, Cary, NC.
35. Solhaug, K.A. 1991. Influence of photoperiod and temperature on dry matter production and chlorophyll in temperate grasses. *Norwegian J. Agric. Sci.* 5:365–383.
36. Tan, W., Tan, G., and P.D. Walton. 1979. Genotype x environment interactions in smooth bromegrass. II. Morphological characters and their associations with forage yield. *Can. J. Genet. Cytol.* 21:73–80.
37. Thomson, A.J., Wright, A.J., and H.H. Rogers. 1973. Studies on the agronomy, genetics and interrelationships of yield and its morphological components in a diallel set of families of *Lolium perenne* L. *J. Agric. Sci.* 80:511–520.
38. Ud-Din, N., Carver, B.F., and E.G. Krenzer. 1993. Visual selection for forage yield in winter wheat. *Crop Sci.* 33:41–45.
39. Worrall, W.D., Caldwell, S.P., Marshall, D.S., McDaniel, M.E., Serna Saldivar, S., and M.D. Lazar. 1995. Registration of 'TAM-202' wheat. *Crop Sci.* 35:1224–1225.
40. Zarrouh, K.M., Nelson, C.J., and D.A. Sleper. 1984. Interrelationships between rates of leaf appearance and tillering in selected tall fescue populations. *Crop Sci.* 24:565–569.